

XL LOW LEVEL

Low Level Heavy Duty Rev 006

If you need a machine that can handle heavy duty bulk depositing, then the Unifiller *XL* is your answer. The main function of the *XL* is to accommodate large volume deposits of cake batter, cheesecake mixture, fruit pie fillings and other soft mixes of up to 9 lbs (4kg) per single shot without damaging the product.

The *XL* can be fitted with a 2.5" (63mm) flexible inlet pipe for drawing products direct from the bottom outlet of a drum or kettle in place of the hopper.

System Includes

- XL Depositor unit to deposit a weight range of between 1 to 9 lbs. (.45 to 4kg) per shot
- 6" Cylinder & Piston
- All stainless steel construction frame with 4 inch locking swivel casters
- Foot operated starter switch (press to get one or hold for multiple shots)
- Telescopic or fixed height stainless steel outlet pipe
- XL PC nozzle
- Extra large 140 quart (35 gallon) (132 L) hopper

Common Applications

- Batter for sponge cakes, cheesecake, brownies, loafs, and more!
- Fruit filling for pies
- Mashed Potato, gravy, sauce and dressings
- Icings, frostings, toppings, jams, jellies, creams, custards mousse and more!
- Anything that can be squeezed through a pastry bag!
- Pour directly from your tilt kettle into the hopper
- Customizable for direct from kettle service
- Great for filling bulk bags and pails



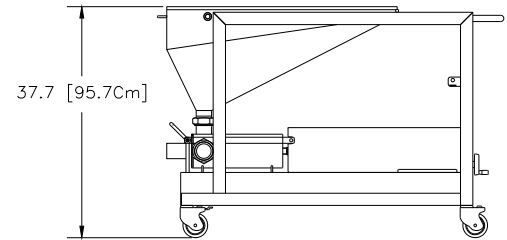
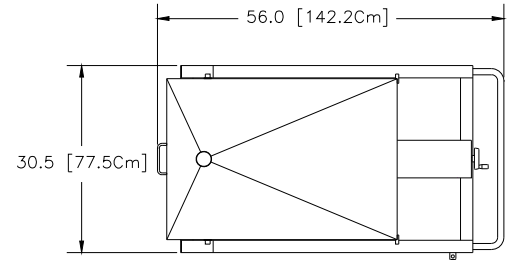
Shown Below with Kettle Connection



***Note:** Standard Temperature Range up to 140°F (60°C). When application is for use between 140-180°F (60-82°C), a HOT changeover Kit is required

Product Cylinder

CYLINDER SIZE	DEPOSIT VOLUME (fl oz)			
	Min		Max	
6"	15 oz	444 ml	150.2 oz	4442 ml
5"	10.3 oz	306 ml	103.4 oz	3059 ml
Bore Reducer Kit for use with 6" Cylinder Reduces 6" to 3"				
	DEPOSIT VOLUME (fl oz)			
	8 oz	106ml	36 oz	1064ml



Shipping Information

Dimensions: 50" x 40" x 42" (127cm x 102cm x 107cm)
 Weight: 300 lbs (136 kg)

Performance Specifications



Speed
Up to 3000 deposits / hr



Power
Air only 6CFM@ 80 PSI
5.5 Bar @ 170 liters/min



Volume
10.3 oz to 150.2 oz
106ml to 4442ml



Particle Size
Up to 1" cube
25mm

Note: Equipment quoted is designed to run at the speeds given, but is dependent on operator efficiency and skill, as well as deposit size and product consistency.

Unifiller Systems Inc.

7621 MacDonald Road, Delta, B.C., Canada, V4G 1N3
 Phone: (604) 940-2233 Toll-free: (888) 733-8444 Fax: (604) 940-2195
www.unifiller.com Email: info@unifiller.com