

# XL LOW LEVEL

*Low Level Heavy Duty* Rev 006

If you need a machine that can handle heavy duty bulk depositing, then the Unifiller *XL* is your answer. The main function of the *XL* is to accommodate large volume deposits of cake batter, cheesecake mixture, fruit pie fillings and other soft mixes of up to 9 lbs (4kg) per single shot without damaging the product.

The *XL* can be fitted with a 2.5" (63mm) flexible inlet pipe for drawing products direct from the bottom outlet of a drum or kettle in place of the hopper.

## System Includes

- XL Depositor unit to deposit a weight range of between 1 to 9 lbs. (.45 to 4kg) per shot
- 6" Cylinder & Piston
- All stainless steel construction frame with 4 inch locking swivel casters
- Foot operated starter switch (press to get one or hold for multiple shots)
- Telescopic or fixed height stainless steel outlet pipe
- XL PC nozzle
- Extra large 140 quart (35 gallon) (132 L) hopper

## Common Applications

- Batter for sponge cakes, cheesecake, brownies, loafs, and more!
- Fruit filling for pies
- Mashed Potato, gravy, sauce and dressings
- Icings, frostings, toppings, jams, jellies, creams, custards mousse and more!
- Anything that can be squeezed through a pastry bag!
- Pour directly from your tilt kettle into the hopper
- Customizable for direct from kettle service
- Great for filling bulk bags and pails



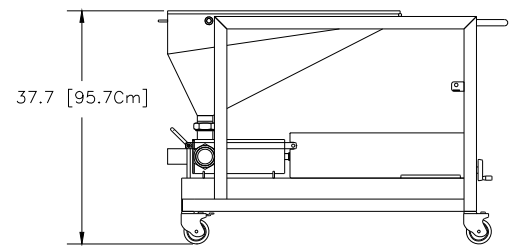
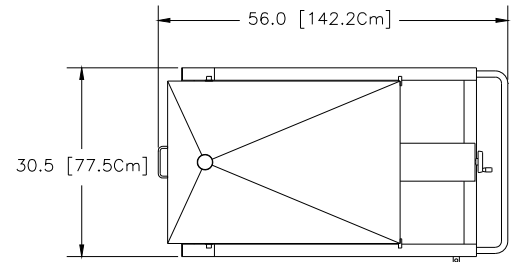
Shown Below with Kettle Connection



**\*Note:** Standard Temperature Range up to 140°F (60°C). When application is for use between 140-180°F (60-82°C), a HOT changeover Kit is required

## Product Cylinder

CYLINDER SIZE	DEPOSIT VOLUME (fl oz)			
	Min		Max	
6"	15 oz	444 ml	150.2 oz	4442 ml
5"	10.3 oz	306 ml	103.4 oz	3059 ml
<b>Bore Reducer Kit for use with 6" Cylinder Reduces 6" to 3"</b>				
	DEPOSIT VOLUME (fl oz)			
	8 oz	106ml	36 oz	1064ml



## Shipping Information

Dimensions: 50" x 40" x 42" (127cm x 102cm x 107cm)  
 Weight: 300 lbs (136 kg)

## Performance Specifications



**Speed**  
 Up to 3000 deposits / hr



**Power**  
 Air only 6CFM@ 80 PSI  
 5.5 Bar @ 170 liters/min



**Volume**  
 10.3 oz to 150.2 oz  
 106ml to 4442ml



**Particle Size**  
 Up to 1" cube  
 25mm

*Note: Equipment quoted is designed to run at the speeds given, but is dependent on operator efficiency and skill, as well as deposit size and product consistency.*